

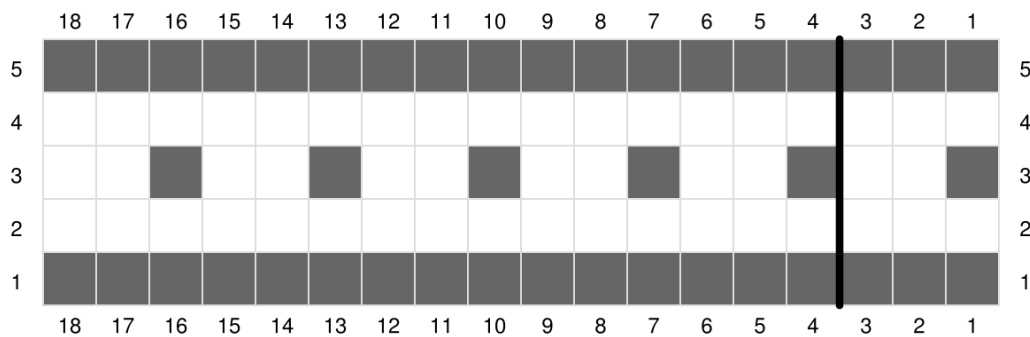
NORDIC SNOWFLAKE CHRISTMAS STOCKING FAIR ISLE CHART

How to Read these Charts

- 1 box = 1 single crochet worked in the back loop
- Row numbers do not match round numbers in pattern.
- White boxes = Color A
- Grey Boxes = Color B
- Read chart from right to left for each round
- Start in bottom right corner in box 1-1

Dotted Border Design (foot)

- Repeat boxes 1-3 of each chart row around stocking.
- End of repeat signaled by black vertical line.

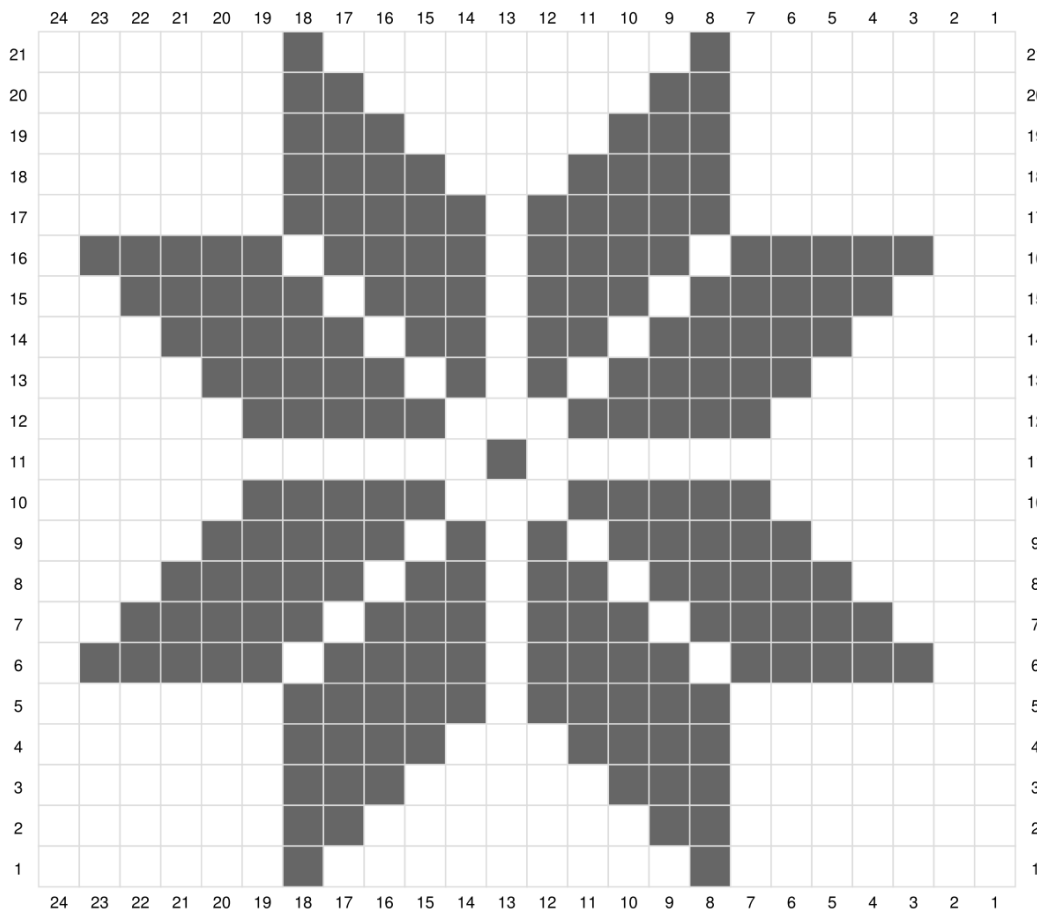


Designed with Stitch Fiddle
www.StitchFiddle.com

NORDIC SNOWFLAKE CHRISTMAS STOCKING FAIR ISLE CHART

Nordic Snowflake Chart (leg)

- Do each chart row 2x per round.
- Trap yarn floats every 3-4 stitches.



Designed with Stitch Fiddle
www.StitchFiddle.com

Terms and Conditions: This pattern was design by Heather Anderson of The Unraveled Mitten. All Rights Reserved. This design, pattern and images are property of The Unraveled Mitten a DBA of Mitten Yarn Collective LLC. The buyer may use the pattern for personal use and charity. You may sell finished items made from this pattern; I just ask you give credit to The Unraveled Mitten. No part of this document may be reproduced, altered or distributed in any form or by any means without express written permission from Heather Anderson.

NORDIC SNOWFLAKE CHRISTMAS STOCKING FAIR ISLE CHART